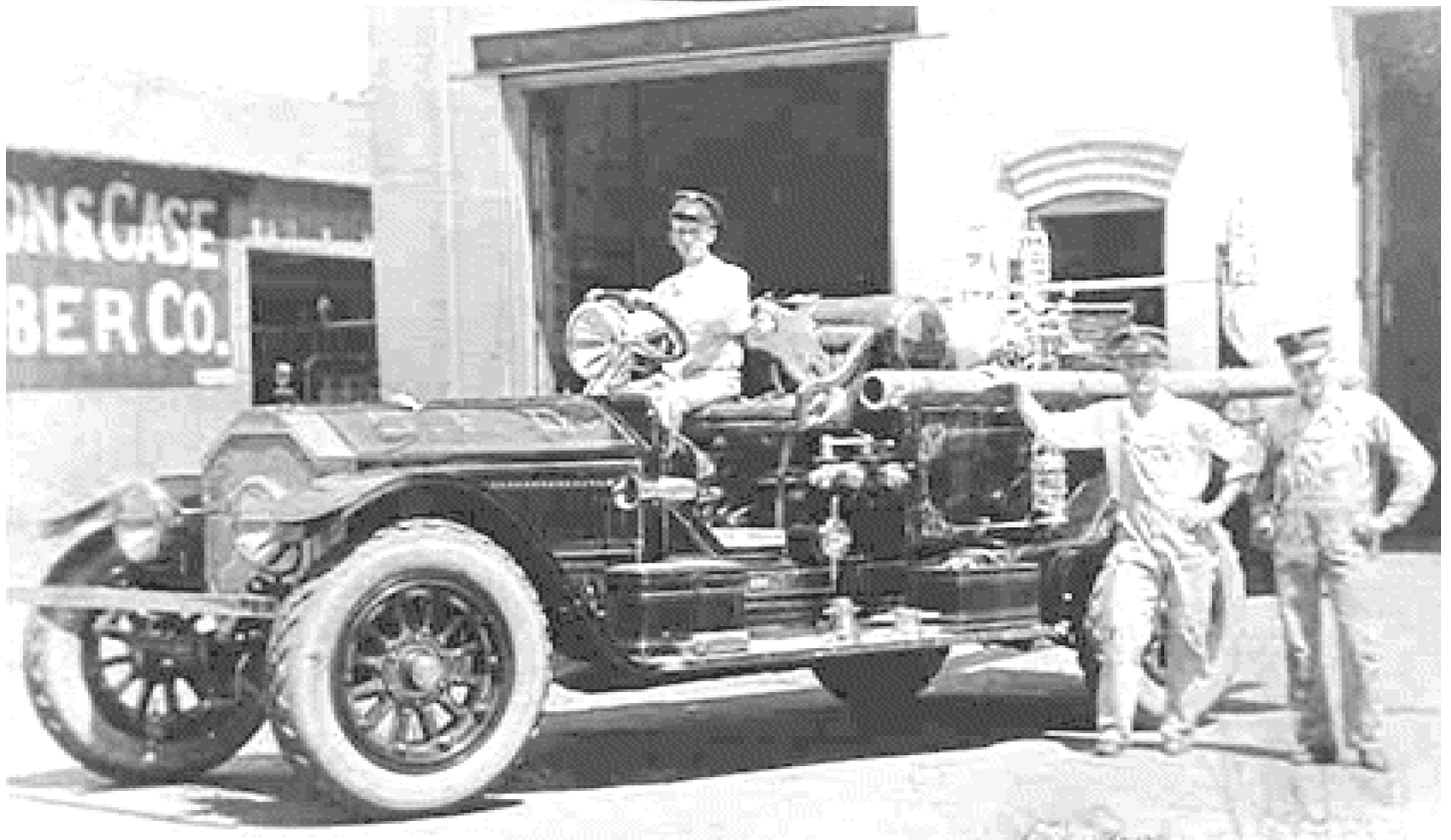
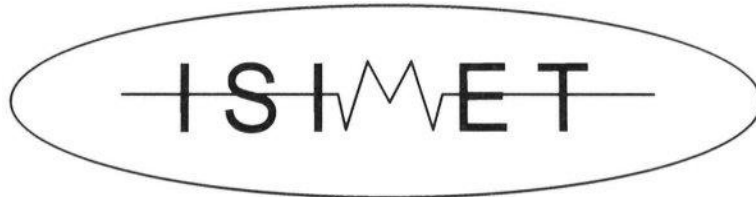


The Fire House Factor

*A Fire Station responds to a local fire alarm, and rushes to the scene.
An open flame is left unattended at the Station.
A kitchen flame burst into a full house fire.
This can be prevented in today's high-tech culture.*



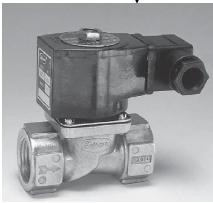
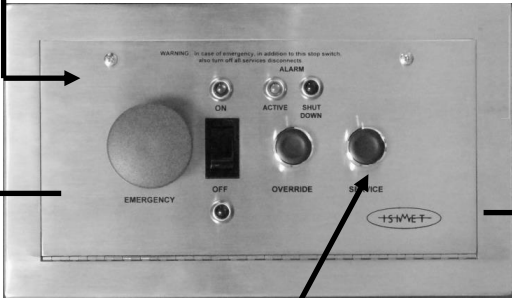
The ISIMET FLA Series Controller ideally suited for use in Fire Stations. When an alarm notification signal calls to action the Fire Fighters, and cook tops, ranges or outdoor grills are inadvertently left ON in the rush to duty. Our FLA Series Control Unit will assure the Fire Fighters that the appliances left unattended will not create another fire to fight.

1. Alarm Notification is received at the Fire Station Alarm Panel. After a brief delay, a signal is transmitted to the FLA Unit.

2. Alarm Notification is received at the FLA Series Controller

3. Immediately ALL integrated devices are disabled and turned **OFF**.
GAS RANGES – OFF
ELECTRIC OVENS – OFF
MICROWAVES - OFF
OUTDOOR GRILLS - OFF

4. Alarm Notification is withdrawn. The FLA Controller is now enabled but **DOES NOT OPERATE**



5. Service is restored only after "Manual" reset at the Panel

In the Kitchen



Out Doors at the Grill



6. Service is restored to the Kitchen Appliances only after **MANUAL** reset at the Panel.
GAS Ranges and Electrical Appliances will now operate.

7. Service is restored to the **REMOTE OPERATOR** but this unit remains **OFF** until it is reset at the site.
Gas Service is only then restored to the Grill.



ISIMET, LLC
103 W.C. J. Wise Parkway
P.O. Box 129
Naples, TX 75568
(903) 897-0737
Fax (903) 897-0740
www.ISIMET.com

***ISIMET* FLA 2235 – Fire House Special**

A special series of the LA Series Controller combined with Solenoids and Electrical Contacts designed specifically to meet the needs of your local Fire Station.

Copyright © 2014 *ISIMET*, LLC.
All rights reserved.
Patent 6,757,589 B1
Other Patents Pending

This document is copyrighted. This document may not, in whole or part, be copied, duplicated, reproduced, translated, electronically stored, or reduced to machine readable form without prior written consent from *ISIMET*, LLC. Although the material contained herein has been carefully reviewed, *ISIMET*, LLC does not warrant it to be free of errors or omissions. *ISIMET* reserves the right to make corrections, updates, revisions, or changes to the information contained herein.

ISIMET is a trademark of *ISIMET*, LLC.

Warranty:

ISIMET will repair or replace any defective parts or workmanship of the product for a period of one year from date of installation. The P.C. Board has a two year limited warranty. Damage caused by incorrect installation or improper usage is not warranted. Failure to follow recommended installation, operation, and/or maintenance procedures listed in this manual may void product warranty. Recovery rights shall be limited to the total sum of the amounts paid for the product by the purchaser. Solenoid valves carry a separate warranty. Refer to documentation provided with those units.

Limits of Liability:

ISIMET's liability shall be limited to costs of repair or replacement parts. The Laboratory Service Panel and Utility Controller are not intended for usage other than those expressly described in this manual. *ISIMET* shall not be liable for damage or injury caused by the improper use of the product.

ISIMET does not warrant against or assume liability for failure of operation or lack of notification to or from secondary integrated monitoring systems. The system should be thoroughly tested and adjustments made at time of initial operation. Periodic testing should be conducted by the user to assure that all components function and operate according to specifications.

Care should be taken in the installation of this product. *ISIMET* shall not be liable for damage or injury caused from the improper installation of the product.

Installations not conforming to the specific requirements stated within this manual are subject to a void of their respective warranty.

Printed in the United States of America

ISIMET FLA Series Controller Fire House Special

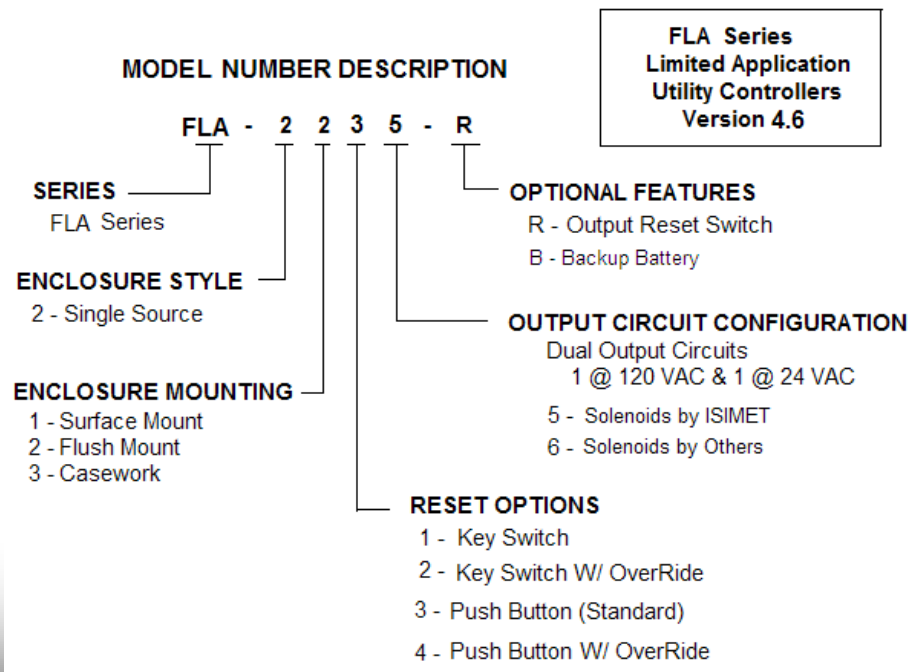


The FLA Series Controller operates as a dual output controller to operate fuel gas outlets as well as electrical devices located within the kitchen in a Fire Station. Input terminals equipped with a delay function will turn OFF all connected appliances when a notification signal is received for a fire or other emergency response. A 10 amp 120 vac circuit is provided at the unit in order to make electrical connect to the range electrical plug used for electronic ignition.

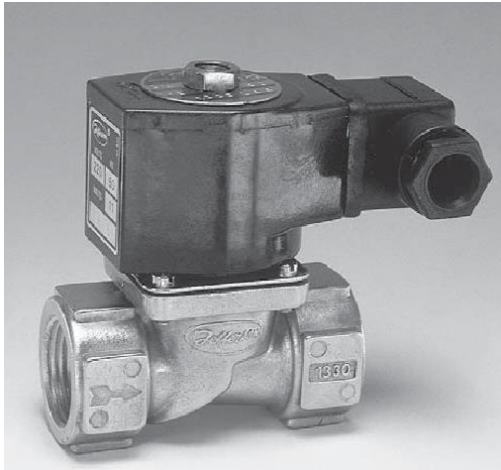
The Alarm Signal initiated by the Fire Response System for the Fire Station will automatically shut down the kitchen's utilities and devices that are operated by the Controller when this System is integrated with the FLA Unit.

A Time Delay circuit on the Version 4.6 FLA Controller allows for up to ten (10) minutes to elapse before shutdown occurs. This delay may prevent a kitchen shutdown in the event that the Alarm is withdrawn during this delay period.

Further, if the response is not such that normal activities at the station must be altered for some of the staff, an OverRide switch on the unit will stop the shutdown.



The *ISIMET* Operators Fuel Gas Solenoids & Electrical Contact Enclosures



Fuel Gas Solenoids:

The *ISIMET* Series 300 solenoid valves feature a normally closed, gas specific aluminum body valve. Standard sizes for this application are 1/2" – 3/4" – 1", and are provided with a 24 inch wiring lead for field connection of output cabling from the Controller.

ISIMET Model	Port Size (in)	Orifice Size (in)	Min. Pressure Diff.	Flow Factor	Operation Pressure		Coil (watt)	24/60 VAC	
					Air/Gas	Water		VA	VA
					psi	psi		Inrush	Holding
S-301	1/2	.75	0	4	3	171,600 *	13	45	27
S-302	3/4	.75	0	4.9	3	241,500 *	13	45	27
S-303	1	1.26	0	11.2	0.75	635,500 *	13	45	27

* BTU @ 0.60 Specific Gravity W/ pressure drop of 0.5 inch water column



Electrical Contact Enclosure- Model E-3104-S-L

The *ISIMET* E-Series Electrical Enclosure features a four-pole normally open multi-pole contact with an integral interface relay. This relay enables the 24-vac output signal from the Controller to turn ON and OFF the circuits operated by the contact.

Optional 50 amp, 3 pole relay permits an electrical range to be added to the list of operated appliances and outlets. Specify E-3104-S-L-50A.

ISIMET LA-7000 Remote Operator



Available with Flip-UP Protective Clear Cover for use with outdoor applications.

The LA-7000 is a secondary control unit that when accompanied with an FLA Unit permits the same level of control for an appliance such as an outdoor gas grill. The unit features a black “OPERATE” ON button and a red OFF or “STOP” button. These operators function independently from the primary control unit. However, an alarm notification signal input to the primary controller or the striking of the primary’s Panic Button will disable this unit. Only after withdrawal of the alarm signal, reset at the primary controller and finally the pressing of this unit’s “OPERATE” button will the gas supply be restored to the grill. The unit is rated for outdoor use and provided with adequate gaskets and sealant.

Operation of a controlled fuel gas solenoid is accomplished by first obtaining a 24-vac operating signal from a companioned and enabled FLA Series Controller. This signal enables the Remote Operator unit. By pressing the OPERATE button, a 24-vac signal operates the solenoid thus supplying gas to the grill. Pressing the STOP button will close the solenoid, thus turning OFF to the grill.

An alarm input signal at the FLA unit will withdraw the operating signal from this Remote Operator. Upon withdrawal of the alarm notification and then after reset of the FLA unit, the operation signal is restored to this unit. However, before natural gas is restored to the grill it is necessary for a local manual reset at the OPERATE button. By this sequence of operation, an open gas supply without presence of an operator or user is averted.

Other Available Products:

ISIMET offers a complete line of Safety Control Systems ideally suited for the Educational Science Laboratory.

Visit us at www.ISIMET.com to find our complete product line of Safety Control Systems.

For further information regarding this system contact *ISIMET* directly or a local sales representative.

